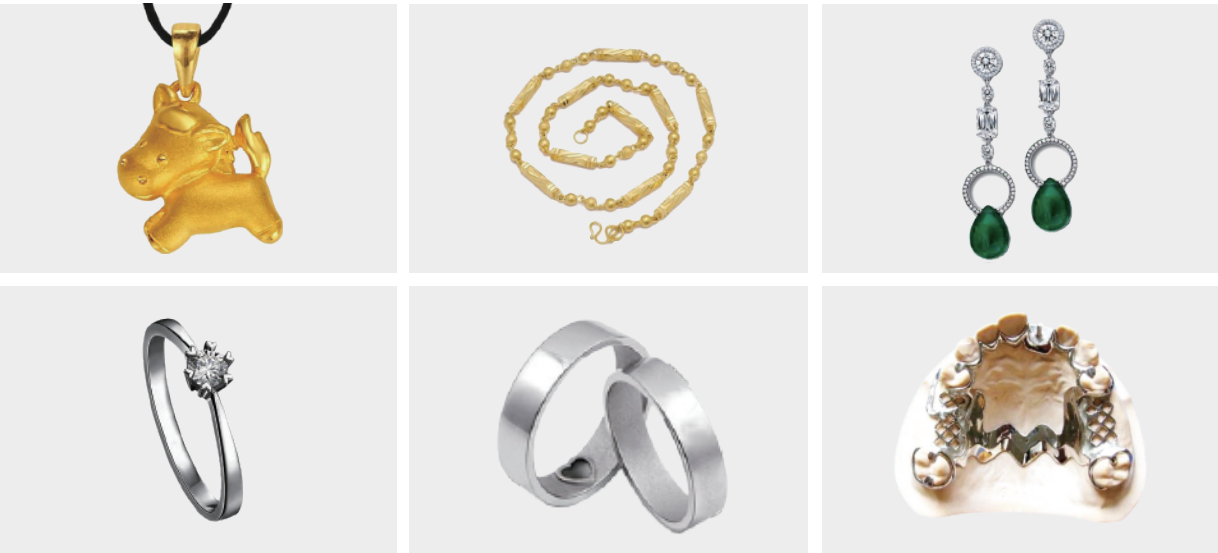
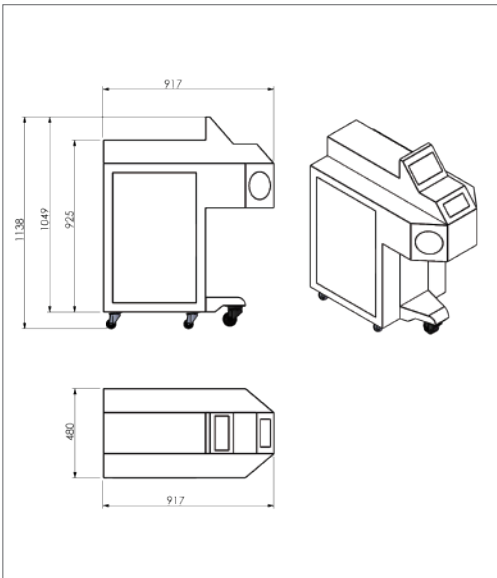
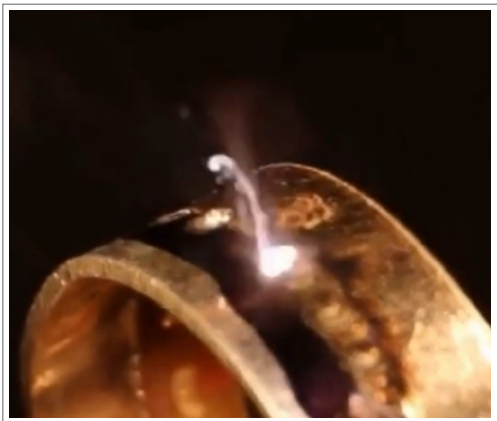


首饰点焊机
JEWELRY SPOT WELDING



产品介绍 Introduction

首饰点焊机是专门针对电子行业和首饰行业而设计，系统稳定，操作方便，可用于金银首饰电子元器件补孔、点焊砂眼、焊镶口等。
The jewelry spot welding machine is specially designed for the electronics industry and the jewelry industry. The system is stable and easy to operate. It can be used for gold and silver jewelry electronic components to fill holes, spot welding sand holes, welding inserts and so on.

设备特点 Feature

- 单脉冲能量高，功耗低，热影响低，焊接时不烫手。
- 高能量的 YAG 脉冲光源，光束质量高。
- 无需填充焊料，焊接速度高，接点可靠，工件变形小，成型美观。
- 水冷一体激光焊接系统，结构紧凑，体积小。
- 稳定的激光电源，确保系统能够 24 小时不间断运行。
- High single-pulse energy, low power consumption, low heat effect, and it is not hot when soldering.
- High efficiency YAG crystal to ensure the best beam quality and energy.
- No need to fill the solder, high welding speed, reliable joint, small workpiece deformation, good molding.
- The water-cooled integrated laser welding system is compact and small in size.
- Stable laser power supply to ensure the system able to operate in 24 hours.

应用行业 Application

广泛应用于珠宝首饰、假牙补砂眼、钟表游丝、集成电路引线各种微小、热敏感零件的精密焊接，适于光电器件、电子、通讯、机械、汽车、军工、黄金首饰等行业。
It is widely used in the precision welding of jewellery, dentures, sand watches, hairsprings, integrated circuit leads, various tiny, heat-sensitive parts, suitable for optoelectronic devices, electronics, communications, machinery, automotive, military, gold jewelry and other industries.

适用材料 Materials

适用于金、银、铝、铜、不锈钢、碳钢、铬、镍、钛、钽等多种金属或合金。
Applicable to gold, silver, aluminum, copper, stainless steel, carbon steel, chromium, nickel, titanium, tantalum and other metals or alloys.

性能 / 型号	Performance/model	SK-LSW100	SK-LSW150	SK-LSW200
最大输出功率	Max.output power	100W	150W	200W
激光波长	Wavelength	1064nm		
冷却方式	Cooling	水冷 Water		
激光斑点直径	Focal diameter	0.1-2mm		
最大脉冲能量	Max. pulse energy	60J		
焊接深度	Welding depth	≤2.5mm		
供电电源	Power supply	220V±10%，50Hz		